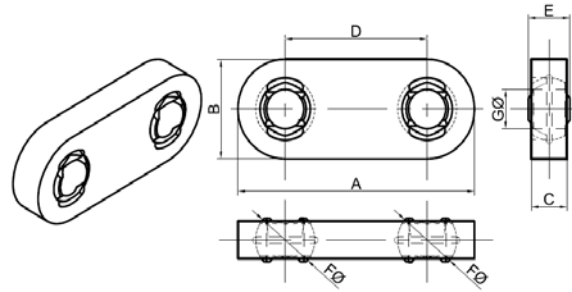




KEYTE SELF-ALIGNING BEARINGS

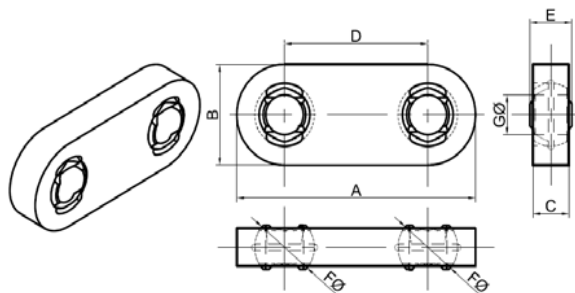


METRIC PIN-SIZE - 'G'

Part-Number	ALL DIMENSIONS IN INCHES (UNLESS STATED OTHERWISE)							Max Angle
	A	B	C	D/mm	E	F	G/mm	+/- deg
KG 127 0105 012	5.63	1.50	0.563	105.0	0.628	1.00	12	
KG 127 0105 016	5.63	1.50	0.563	105.0	0.686	1.00	16	9.0
KG 128 0063 020	4.50	2.00	0.750	63.5	0.875	1.25	20	7.6
KG 128 0076 020	5.00	2.00	0.750	76.2	0.875	1.25	20	7.6
KG 128 0110 020	6.33	2.00	0.750	110.0	0.875	1.25	20	7.6
KG 128 0130 020	7.12	2.00	0.750	130.0	0.875	1.25	20	7.6
KG 128 0150 020	7.91	2.00	0.750	150.0	0.875	1.25	20	7.6
KG 128 0250 020	11.84	2.00	0.750	250.0	0.875	1.25	20	7.6
KG 128 0285 020	13.22	2.00	0.750	285.0	0.875	1.25	20	7.6
KG 128 0410 020	18.14	2.00	0.750	410.0	0.875	1.25	20	7.6
KG 119 0075 22A	5.95	3.00	1.000	75.0	28mm	1.75	22	4.1
KG 119 0075 024	5.95	3.00	1.000	75.0	1.250	1.75	24	10.7
KG 119 0075 025	5.95	3.00	1.000	75.0	1.250	1.75	25	10.7
KG 119 0160 22A	9.30	3.00	1.000	160.0	28mm	1.75	22	4.1
KG 119 0160 024	9.30	3.00	1.000	160.0	1.250	1.75	24	10.7
KG 119 0160 025	9.30	3.00	1.000	160.0	1.250	1.75	25	10.7
KG 119 0200 22A	10.87	3.00	1.000	200.0	28mm	1.75	22	4.1
KG 119 0200 024	10.87	3.00	1.000	200.0	1.250	1.75	24	10.7
KG 119 0200 025	10.87	3.00	1.000	200.0	1.250	1.75	25	10.7
KG 119 0226 22A	11.90	3.00	1.000	226.0	28mm	1.75	22	4.1
KG 119 0226 024	11.90	3.00	1.000	226.0	1.250	1.75	24	10.7
KG 119 0226 025	11.90	3.00	1.000	226.0	1.250	1.75	25	10.7
KG 119 0240 22A	12.45	3.00	1.000	240.0	28mm	1.75	22	4.1
KG 119 0240 024	12.45	3.00	1.000	240.0	1.250	1.75	24	10.7
KG 119 0240 025	12.45	3.00	1.000	240.0	1.250	1.75	25	10.7
KG 119 0300 22A	14.81	3.00	1.000	300.0	28mm	1.75	22	4.1
KG 119 0300 024	14.81	3.00	1.000	300.0	1.250	1.75	24	10.7
KG 119 0300 025	14.81	3.00	1.000	300.0	1.250	1.75	25	10.7



KEYTE SELF-ALIGNING BEARINGS



METRIC PIN-SIZE - 'G'								
Part-Number	ALL DIMENSIONS IN INCHES (UNLESS STATED OTHERWISE)							Max Angle
	A	B	C	D/mm	E	F	G/mm	+/- deg
KG 122 0080 030	7.15	4.00	1.125	80.0	1.500	2.13	30	12.9
KG 122 0080 032	7.15	4.00	1.125	80.0	1.500	2.13	32	12.9
KG 122 0120 030	8.72	4.00	1.125	120.0	1.500	2.13	30	12.9
KG 122 0120 032	8.72	4.00	1.125	120.0	1.500	2.13	32	12.9
KG 122 0150 030	9.91	4.00	1.125	150.0	1.500	2.13	30	12.9
KG 122 0150 032	9.91	4.00	1.125	150.0	1.500	2.13	32	12.9
KG 122 0240 030	13.45	4.00	1.125	240.0	1.500	2.13	30	12.9
KG 122 0240 032	13.45	4.00	1.125	240.0	1.500	2.13	32	12.9
KG 122 0260 030	14.24	4.00	1.125	260.0	1.500	2.13	30	12.9
KG 122 0260 032	14.24	4.00	1.125	260.0	1.500	2.13	32	12.9
KG 122 0300 030	15.81	4.00	1.125	300.0	1.500	2.13	30	12.9
KG 122 0300 032	15.81	4.00	1.125	300.0	1.500	2.13	32	12.9
KG 122 0315 030	16.40	4.00	1.125	315.0	1.500	2.13	30	12.9
KG 122 0315 032	16.40	4.00	1.125	315.0	1.500	2.13	32	12.9
KG 122 0340 030	17.39	4.00	1.125	340.0	1.500	2.13	30	12.9
KG 122 0340 032	17.39	4.00	1.125	340.0	1.500	2.13	32	12.9
KG 122 0370 030	18.57	4.00	1.125	370.0	1.500	2.13	30	12.9
KG 122 0370 032	18.57	4.00	1.125	370.0	1.500	2.13	32	12.9
KG 123 0200 035	14.62	6.75	1.250	200.0	1.625	2.50	35	10.5
KG 123 0200 040	14.62	6.75	1.250	200.0	1.625	2.50	40	10.5
KG 123 0200 042	14.62	6.75	1.250	200.0	1.625	2.50	42	10.5
KG 123 0203 035	14.74	6.75	1.250	203.0	1.625	2.50	35	10.5
KG 123 0203 040	14.74	6.75	1.250	203.0	1.625	2.50	40	10.5
KG 123 0203 042	14.74	6.75	1.250	203.0	1.625	2.50	42	10.5
KG 123 0310 035	18.95	6.75	1.250	310.0	1.625	2.50	35	10.5
KG 123 0310 040	18.95	6.75	1.250	310.0	1.625	2.50	40	10.5
KG 123 0310 042	18.95	6.75	1.250	310.0	1.625	2.50	42	10.5